

# STEAM

## SCIENCE, TECHNOLOGY, ENGINEERING, ARTS, & MATHEMATICS

Nationally certified for STEM Excellence by the *National Institute for STEM Education*, Washington STEAM prepares our next generation of innovators to:

- Understand complex, real-world problems;
- Apply learning across content areas to develop potential solutions;
- Use research and collaboration to build knowledge and improve their designs.

In addition to an innovative academic program, Washington STEAM values the opportunity to provide STEAM elective and enrichment opportunities including musical theatre, robotics, and STEAM exploratory during and after the school day.

## MATH ACADEMY

Math Academy is a radically accelerated sequence of courses for mathematically gifted students.

- Curriculum matches students' advanced abilities, preparing them to excel in honors math and science programs at universities.
- Students also compete in SOLVE, Math Academy's exciting annual competition.



# SPANISH

## SPANISH DUAL LANGUAGE IMMERSION PROGRAM

Our program is based on a two-way model, meaning that classrooms are composed of both English-dominant and Spanish-dominant speakers. Students support each other in their development of both languages.

Students advance their language skills by taking two or more classes in Spanish each year, including history and Spanish Language Arts.

Specialized arts and STEAM courses including musical theatre and robotics are offered as after-school electives.

## PROGRAM CHARACTERISTICS

Our dual language classroom environments encourage bilingualism and foster the study and maintenance of Spanish skills through:

- Consistent practice daily in oral and written form;
- Intensity of instruction;
- Use of Spanish at advanced cognitive levels.

Program characteristics are research-based and critical to the development of bilingualism, biliteracy, academic success, and multicultural understanding.

Additional Spanish courses are offered for beginners and for students who speak conversational Spanish.





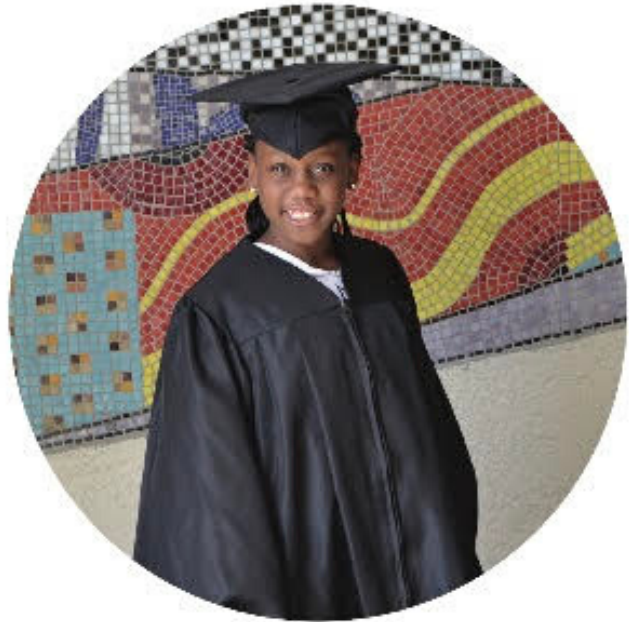
# COLLEGE PREP

## COLLEGE READINESS SKILLS

Teachers incorporate inquiry, collaboration, and organizational tools into everyday instruction to prepare all students for college readiness and success in a global society.

College prep elective courses provide additional supports to inspire students to take control over their own learning.

- Inquiry-based instruction
- Writing to Learn
- Collaborative Learning Groups
- College Field Trips
- Community Partnerships
- STEAM Guest Speakers
- Student-centered Environments



## INDIVIDUALIZED SUPPORT

Students learn how to succeed by developing their unique talents into strengths using *StrengthsFinder*, an online software program.

Teachers learn and celebrate each child's unique abilities, perspectives, and interests by:

- Providing opportunities for voice and choice, wherein students drive their own learning;
- Promoting positive interactions with other students in a diverse community;
- Differentiating by level or interest for continuous improvement for all;
- Building on students' strengths to increase academic achievement and social-emotional competencies, preparing students for college and career.



# ENROLL

## English STEAM Magnet Program

- Washington STEAM Multilingual Academy has an existing attendance area that identifies students who are guaranteed a seat in the *English* STEAM program.
- Students living within this boundary who wish to participate in the *English* STEAM program may skip the application process and register at the school.
- All out-of-zone students must apply online through PUSD's Open Enrollment lottery.

## Spanish Immersion STEAM Magnet Program

- All current PUSD Spanish dual language students may register at the school during the fall priority enrollment period.
- Students who miss priority registration and those who are new to the PUSD DLIP Program must apply online through PUSD's Open Enrollment lottery.

Get more  
information  
and enroll!  
[gopusd.com/  
enrollment](https://gopusd.com/enrollment)